

# SALFIT GOVERNORATE

Palestinians

Vs

Israeli Settlers

## Population



1.6x Vs. 2.8x

### Palestinian Population Growth

In 1997: **46,077** people to  
Currently: **73,695** people

(1.6x growth)

### Israeli Settler Population Growth

In 1997: **17,236** people to  
Currently: **48,045** people

(2.8x growth)

## Demographics



12% shift

In 1997: **73%** of inhabitants to  
Currently: **61%** of inhabitants.

In 1997: **27%** of inhabitants to  
Currently: **39%** of inhabitants

### Outdated Master Plans

Restricting land use/development to:  
**22%** (48,003 dunums classified as A or B)

Leaving lands unusable/ Inaccessible:  
**78%** (169,045 dunums classified as C)

## Land



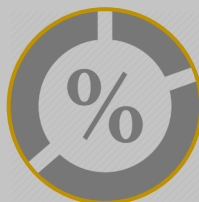
Inaccessibility Vs. Growth

### Growth in Built Up Area

In 1997: **17,053** dunums of built up area  
Currently: **25,123** dunums of built up area

**1.5x average growth** and up to a **10.5x growth**  
in certain settlements.

## Zoning



50/50 zoning

Lands falling under Palestinian jurisdiction:  
(**48,000 dunums** classified A or B)

Lands falling under Israeli settlement jurisdiction:  
(**43,478 dunums** within settlement plans)

### Demolition

107 demolitions and 148 orders

Displacing/threatening of **1,500 persons**  
and thousands others compelled to build in Area C.

## Expansion



Demolition Vs. Development

### Development

**2,538 new units**  
(planned and/ or published housing tenders)

**10,000+** increase in settler population



**JLAC**

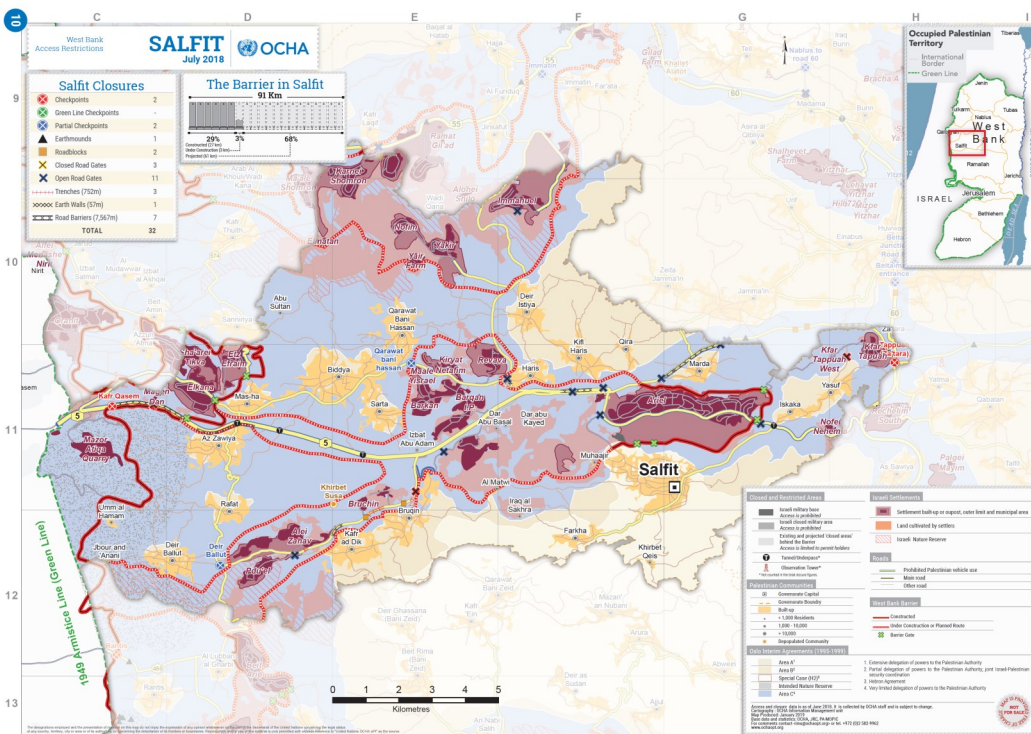
The Jerusalem Legal Aid & Human Rights Center

AUGUST 2020

# Settlement Expansion

The governorate of Salfit, situated in the central West Bank, is plagued by rampant settlement expansion which has rendered it, fragmented, and in the case of its eastern pockets of villages, enclaved. For Israel has sought to expand the built up areas of its settlements and to connect them with each other and Israel, at the expense of Palestinian contiguity. To this affect, the central ridge of settlements (*i.e. settlement Bloc of Ariel*) are encased by the annexation wall and other associated fences, that cut as far as 20km into the Green Line. Home to 18 villages, and Salfit city (*i.e. Mas-ha, Biddya, Sarta, Qarawat Bani Hassan, Deir Istiya, Haris, Kifl Haris, Qira, Az Zawiya, Deir Ballut, Rafat, Marda, Yasuf, Iskaka, Khirbet Qeis, Farkha, Bruqin, and Kafr ad Dik*) the Palestinian population in the governorate stands at 73,696 persons (an 1.6x increase since 1997). Comparably, the settler population form among the 16 settlements (*i.e. 16 Israeli settlements Karnei Shamron, Elmatan, Nofim, Yakir, Immanuel, Etz Efraim, Elkana, Kiryat Netafim, Reveva, Ariel, Kfar Tapuah, Nofei Nehemia, Barqan, Bruchin, Alei Zahav, Pedu'el*) stands at 48,045 persons (and 2.8x increase since 1997). Such has served to shift the demographics by 12%, from 73% Palestinians in 1997 to 61% Palestinians, as per the latest statistics. There are additionally 6 outs posts (*e.g. Ramat Gil'ad (outpost established 2002), Alonei Shilo (outpost established 1999), Yair Farm (established 2001), Magen Dan (outpost established in 1999), Ma'ale Yisrael (outpost established in 1997), Kfar Tapuah West (outpost established in 2001)*), in addition to Mazor Atiqa (Quarry) and Barqan Industrial zone, bypass roads and associate wall and fencing (*i.e. 32 closures comprising 4 partial/checkpoints, 14 gates, 2 road blocks, 1 earth mounds, 3 trenches, 1 earth wall, and 7 road Barriers*), as per OCHA July 2018 figures, which additional overtake and deny Palestinians of their lands

Of the governorate's 217,048 dunums, solely 48,003 dunums fall within Palestinian jurisdiction (11,941 dunums classified as A and 36,062 classified as B) for use and development. Such is nearly equivalent to the 43,478 dunums falling within the various settlement jurisdiction. While Palestinians are denied enjoyment of nearly 78% (169,045 dunums classified as C) of their lands and remain confined to their arbitrary and outdated master plans (which exclude them from the planning process and subject them to eminent risk of house demolition when building upon their privately one land classified as C); Israeli settlements in the vicinity have enjoyed consistent expansion (*a 1.5x average rate of expansion from 17,053 dunums of built up area in 1997 to 25,123 dunums of built up area in 2018, with up to a 10.5x rate of expansion in the case of certain settlements let alone those that had not even existed prior to 1997*). According to recently announced plans and published tenders, 2,538 new units are in the works anticipating to yield a 10,000+ increase in settler population (as per Peace Now documents for 2018-mid 2020 recorded plans/tenders), as well as aa plan for a new industrial zone on an area of 2,000 dunums (as informed by Peace Now). This expansionist momentum has dualy been met with intensified demolition of Palestinian homes and livelihood structures with 107 demolitions being carried out (as per OCHA figures for 2009 and onwards) and 148 demolition orders being issued (as per JLAC's case information from 2018-mid 2020), displacing/threatening 1,500 persons, in addition to the thousands of others compelled to build on their privately owned land in Area C awaiting similar fates. In an effort to mitigate such ends, JLAC will continue in its outreach and legal aid work in the governorate.



## Contact Us

**Ramallah Office:**  
 Millennium Bldg. 6th fl.  
 Kamal Nasser Street  
 Ramallah- Palestine  
 Tel.: +970 2 298 7981  
 Fax: +970 2 298 7982

[www.jlac.ps](http://www.jlac.ps)