

QARAWAT BANI HASSAN



Fact Sheet

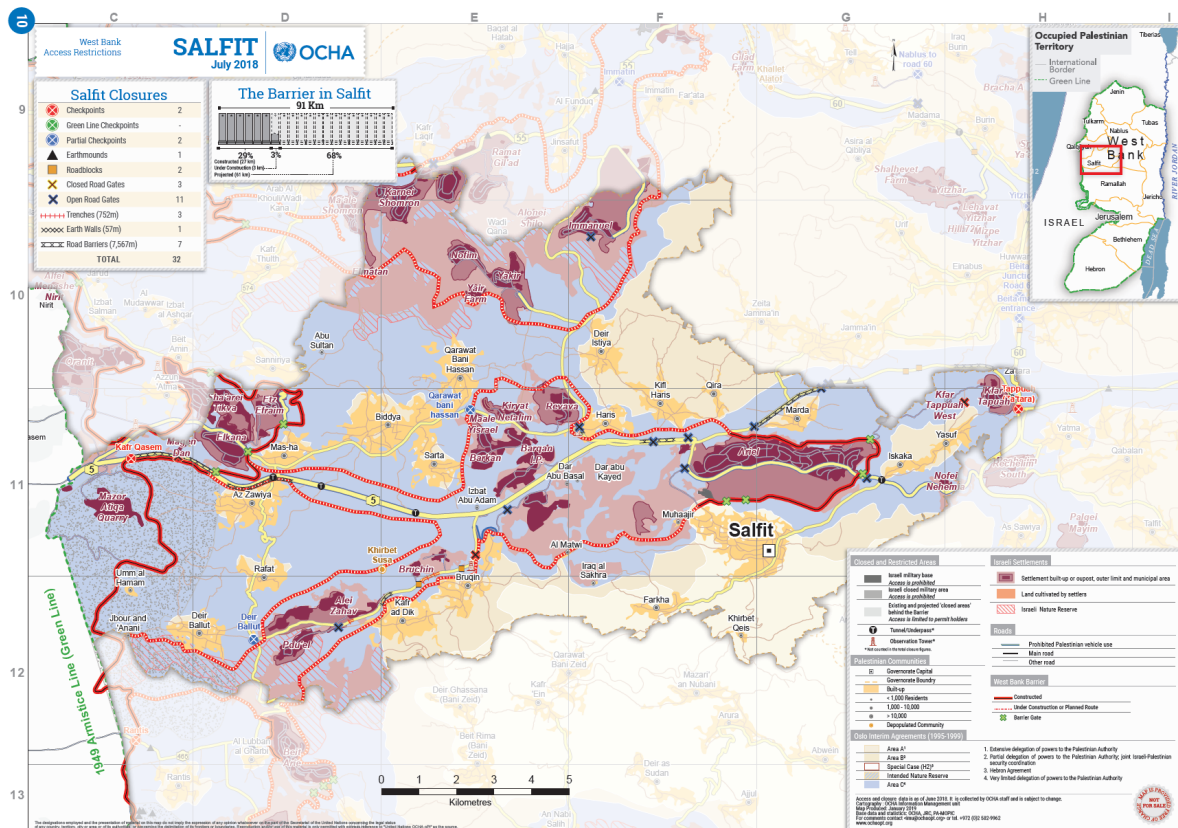
August 2020

Fragmentation & Settlement Expansion

Located in the north-central governorate of Salfit, Qarawat Bani Hassan, as the entirety of its governorate, has long been earmarked for annexation for Israeli settlement enterprise purposes. Fragmented by large settlement blocks and their network of bypass roads and associated walls/fences, the governorate of Salfit has in affect been segmented into three enclaves of village clusters (to the north, west, and south-east). Within its cluster (which includes to the west of the villages of Deir Istiya and Haris, to the north of Sarta and Biddya, among other villages), Qarawat Bani Hassan has been further confined by its limited masterplan and ever encroaching surrounding settlements which consume and prohibit the use of the village's lands (to the north: Kedumim settlement bloc (Karneh Shomron, Nofim Yair Farm, Yakir, Immanuel), to the south-west: (Magen Dan, Azzun 'Atma, Sha'arei Tikva, Elkana, Etz Efram) and to the south-east: Ariel settlement bloc (Ariel, Barqan, Revava, Kiryat Netafim, Maale Yisrael, Barkan, Bruchin, Alei Zahrav, Pdu'el).

About JLAC

The Jerusalem Legal Aid and Human Rights Center (JLAC) is mandated with providing pro-bono legal aid and consultation in the defense of human rights, both in East Jerusalem and the remainder of the West Bank. JLAC has coupled its legal aid with public interest cases, legal reform, community awareness, and advocacy.



Land Confiscation & House Demolition

Settlement expansion brings with it a host of human rights violations from the violation to the right to property, equality, an adequate standard of living and freedom of movement to the ultimate denial of self-determination and fulfillment of a two-state solution. Of the villages near 9,500 dunams (1 dunam equaling 1,000 sq. meters), approximately 850 dunams have been classified as B (as per the village's 2016 masterplan) allowing solely for development in 10% of the village in meeting its growing population (which now stands at nearly 5,400 persons, according to PCBS). Of the remaining 8,600 dunams classified as C, 1,596 dunams fall behind settlement walls/fences, 411 dunams have been annexed for direct settlement construction (settlements of Berkan and Kiryat Netafim), 400 dunams have been reclassified into a nature reserve, and the remaining lands have either been rendered inaccessible and/or prohibited from use. (according to the Palestinian Land and Water Settlement Commission). The restrictive masterplan has resulted in nearly 400 homes being built on private Palestinian lands designated as C, subjecting approximately 130 homes to the issuance of demolition orders dating back to 2008 (as estimated by the local council and concurred with ICA figures). Most distressing is the recent escalation in the issuance of demolition orders, with 30 of the said orders being issued in the first half of 2020 alone. (See a note on the blanket demolition orders issued in Qarawat Bani Hassan issued by JLAC in April 2020 for more details: <http://www.jlac.ps/userfiles/Blanket%20Demolition%20Orders%20Issued%20in%20Safit.pdf>)

JLAC's Interventions

JLAC's interventions for the village have included the provision of legal aid, addressing 53 cases of house demolition in Qarawat Bani Hassan thus far. Solely 3 have closed (2 closing positively and 1 resulting in a demolition). The remaining cases stand in various stages of litigation, with only further restrictions anticipated. Outreach has also been prioritized towards ensuring community preparedness in the Salfit governorate in the face of continued issuance of demolition orders. Such has taken the form of community awareness, group consultations, and training of local council members towards ensuring knowledge of what documentation to have on hand/ legal mechanisms to be followed, taking on cases in bulk, developing a referral system between the local council and JLAC, etc.

While legal aid and outreach play a critical role in immediate protection, diplomatic pressure is key in dismantling settler colonialism once and for all.

Ways in which you can help include:

- To expose the Israeli policy of home demolition and denying construction permits in Qarawat Bani Hassan as a microcosm for the general situation under occupation, especially in area C;
- To document the names of foreign corporations that take place in the demolition and bulldozing of the houses and demand investigations into their action under domestic European jurisdictions;
- To demand your home countries uphold their responsibilities as third states in holding Israel accountable for its war crimes and complicit companies to account.

Contact Us

Ramallah Office:

Millennium Building, 3rd fl
Kamal Nasser Street
Ramallah- Palestine
Tel.: +970 2 298 7981
Fax: +970 2 298 7982

www.jlac.ps



JLAC

JERUSALEM LEGAL AID AND HUMAN RIGHTS CENTER
مركز القدس للمساعدة القانونية وحقوق الإنسان